

NORTHERN NEVADA
Public Health 2024-2025 Respiratory Virus Surveillance
CDC Week #40 Sep. 29, 2024 - Oct. 5, 2024

Division of Epidemiology & Public Health Preparedness (EHPH) 775-328-2447

Danika Williams, MPH, Epidemiologist, Influenza Surv. Coordinator dmwilliams@nnph.org

Adam Vazquez, MPH, Epidemiologist, COVID Surv. Coordinator avazquez@nnph.org

Lissa Callahan, Statistician, lcallahan@nnph.org

Weekly Summary & Changes from Previous Week *

- Influenza-like-illness (ILI) Activity: 1.6%
- Influenza Hospitalizations: 1.0 per 100,000 population
- Influenza Deaths: 0 reported from MMWR week 40 to current date
- COVID Cases: 22.0 per 100,000 population
- COVID Deaths: 1 reported from MMWR week 40 to current date
- Respiratory Syncytial Virus (RSV): 0.4 per 100,000
- Syndromic Surveillance:
 - No aberrations detected in ILI ED and UC visits
 - **Increase** in influenza ED and UC Visits was detected

*For definition and specifics on metrics summarized, please refer to corresponding sections.

Key Message(s)

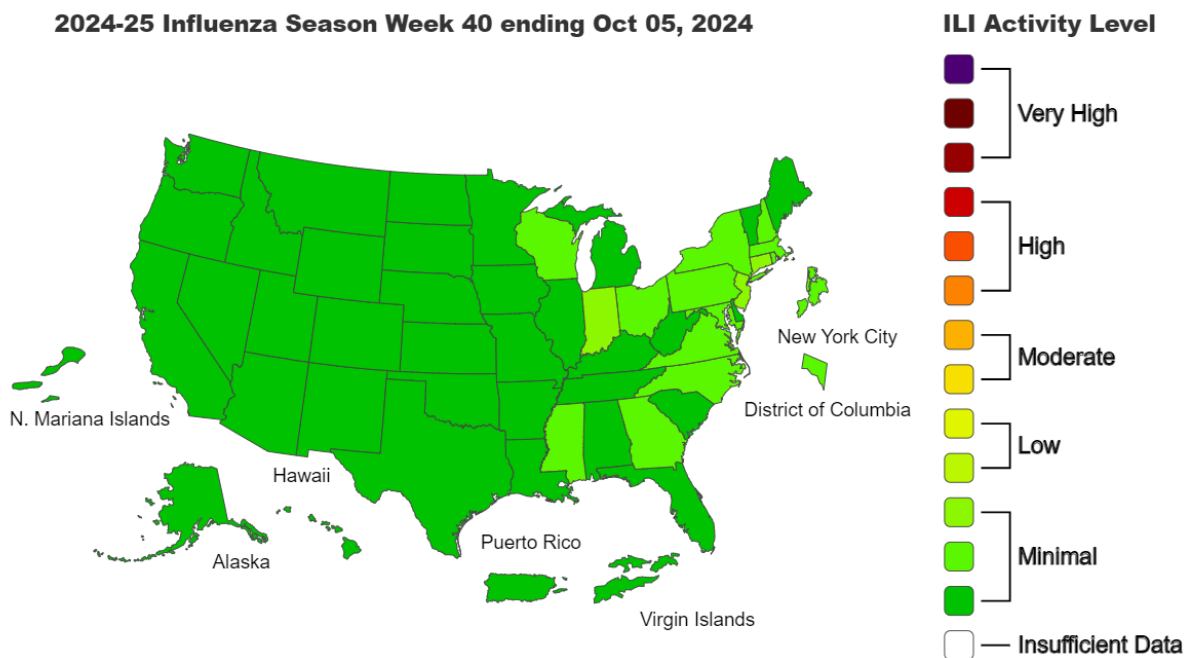
- Respiratory virus season has begun, and respiratory virus activity (influenza, COVID-19, and RSV) is low.
- Washoe County, Region 9, and US ILI are below baselines.
- ILI activity is highest in the 0–4-year age group.
- Influenza hospitalization rates were highest in the ≥65-year age group.
- The most frequently identified influenza virus type reported by public health laboratories locally was influenza A (Unknown) and nationally was influenza A (2009 H1N1).
- Reported COVID-19 cases have been decreasing since the beginning of September and decreasing hospitalizations have followed.
- NNPH now has a new **Respiratory Virus Surveillance** website where future weekly reports will now be posted. The **influenza** and **COVID-19** surveillance pages continue to exist for access to respective historical reports.

Influenza-like-illness (ILI)

Influenza-like-illness (ILI) is defined as fever ($\geq 100^{\circ}\text{F}$ [37.8°C]) and cough and/or sore throat. ILI data is submitted weekly by inpatient and outpatient health services who have completed the onboarding process to be a sentinel surveillance provider. ILI activity levels use the proportion of outpatient visits to healthcare providers for respiratory illness, not laboratory confirmed influenza. ILI activity may capture patient visits due to other respiratory pathogens that cause similar symptoms to influenza.

- Out of 14 sentinel providers, 14 reported data for this CDC week.
- U.S. percentage of patients presenting with ILI was 1.9%.
- Region 9 percentage of patients presenting with ILI was 2.1%, which is **BELOW** the regional baseline of 3.8%.
- Nevada percentage of patients presenting with ILI was not reported for this CDC Week.
- Washoe County percentage of patients presenting with ILI reported by sentinel providers for the current week was 1.6%.
- The highest proportion of patients presenting with ILI was among the 0–4-year age group at 6.0%.
- The lowest proportion of patients presenting with ILI was among the ≥ 65 -year age group at 1.1%.

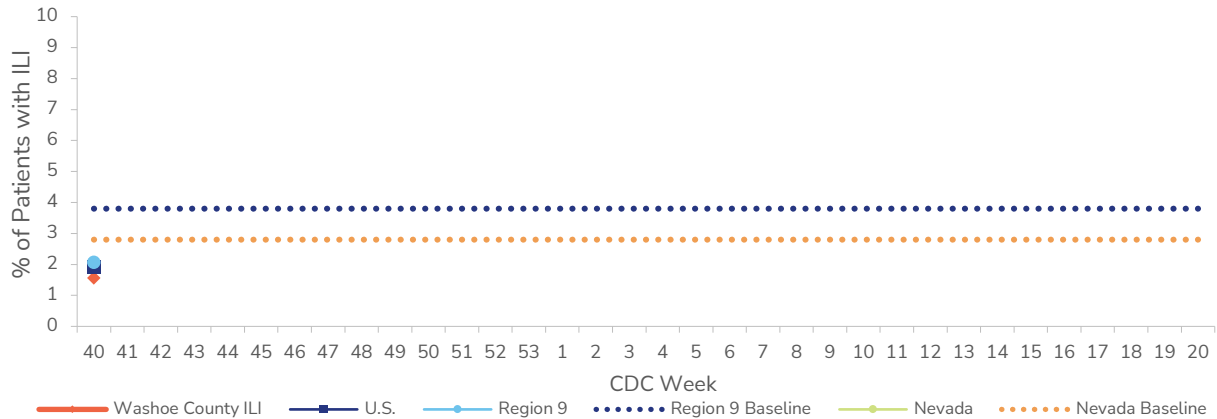
Figure 1. Outpatient Respiratory Illness Activity Map by State for Week 40, United States, 2024-2025



Data Source <https://www.cdc.gov/fluview/surveillance/>

Data in this report are preliminary and may be updated in future reports as additional information is received throughout the respiratory virus season.

Figure 2. Comparison of ILI Activity at the Local, State, Regional, and National Level, Washoe County, 2024-2025*

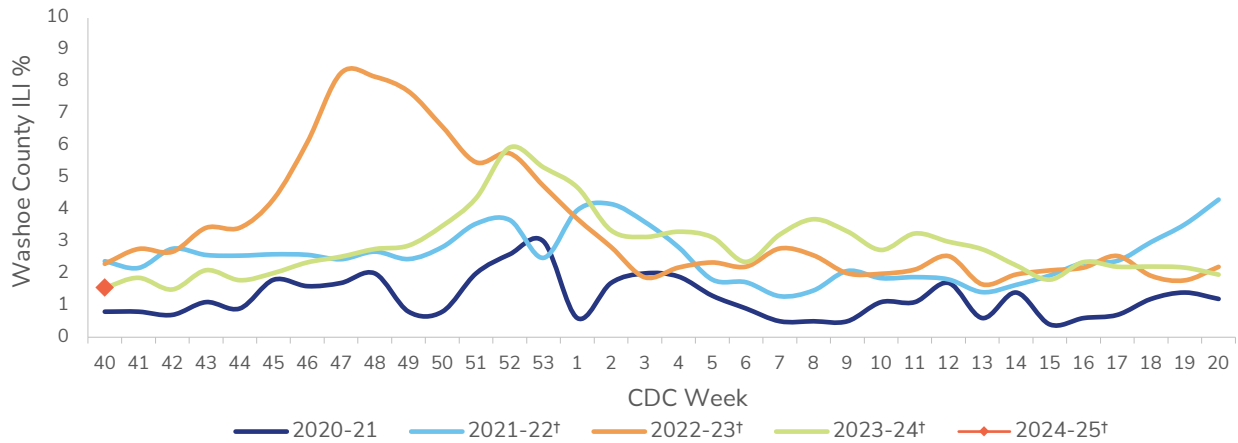


*Nevada percentage of patients presenting with ILI was not reported for this CDC Week.

Data source for U.S., Region 9, and Nevada ILI activity and baselines: <https://gis.cdc.gov/grasp/fluview/fluportaldashboard.html>

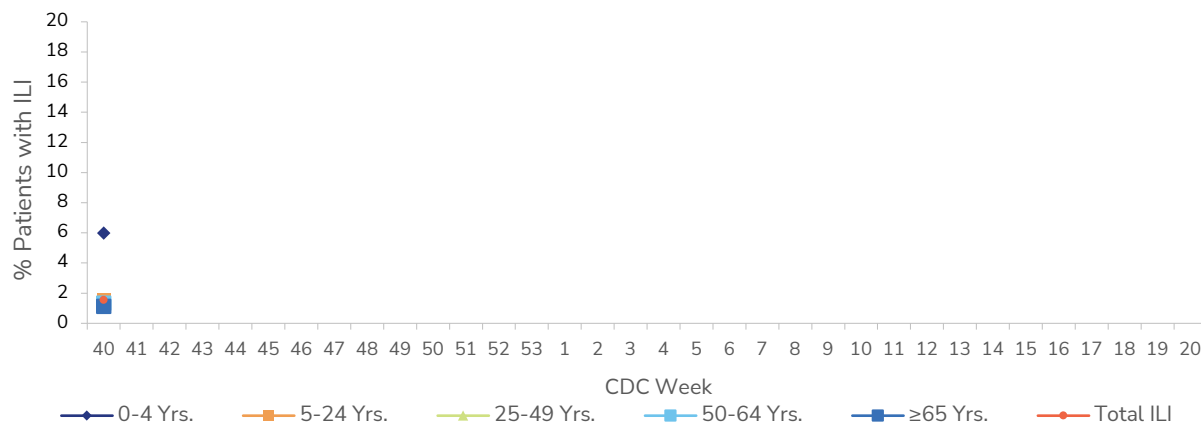
Region 9 & U.S. data are weighted, Nevada is unweighted. CDC methods: <https://www.cdc.gov/fluview/overview/index.html>

Figure 3. ILI Activity Reported by Sentinel Providers, Washoe County, 2020-2024 Seasonst



† Does not have a week 53, so the week 53 value is an average of week 52 and week 1.

Figure 4. ILI Activity Reported by Sentinel Providers by Age Group, Washoe County, 2024-2025



Data in this report are preliminary and may be updated in future reports as additional information is received throughout the respiratory virus season.

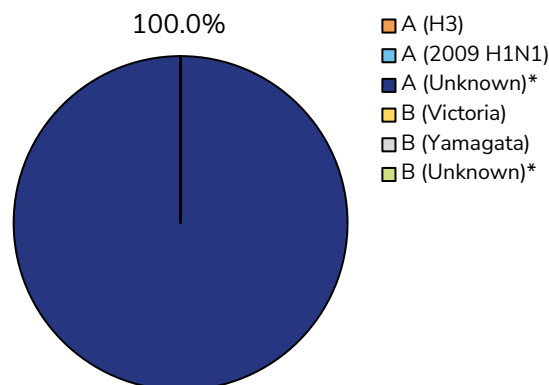
Nevada State Public Health Laboratory (NSPHL) Influenza Test Results

The NSPHL performs influenza subtyping of specimens submitted for surveillance purposes. Specimens are primarily submitted to the NSPHL by sentinel provider sites; however, all typed specimens are included in surveillance, even those not submitted by sentinel providers.

- The highest proportion of NSPHL specimens were A (Unknown) at 100.0% (n=11) of specimens.
- The highest proportion of NSPHL specimens to date have been A (Unknown) at 100.0% of specimens.

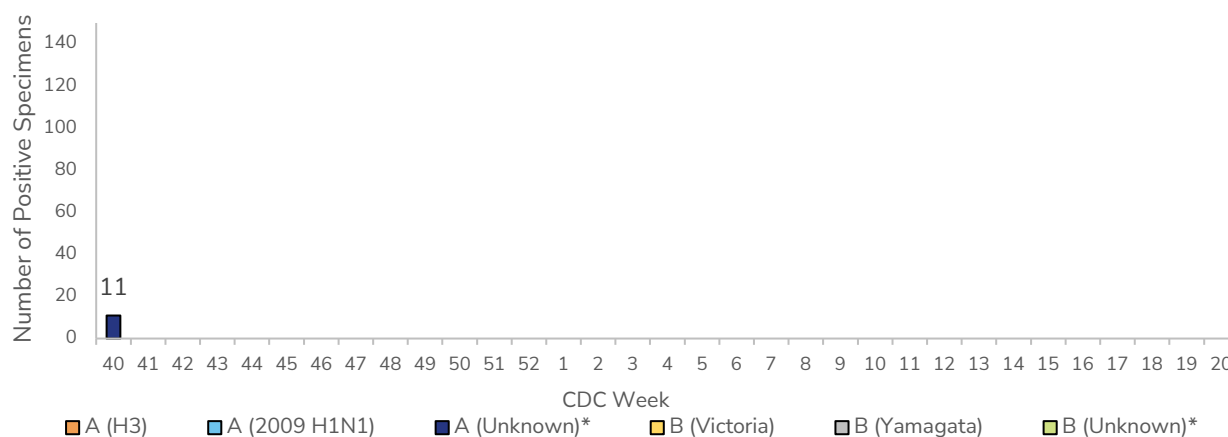
Table 1 & Figure 5. Specimens Submitted to NSPHL for Subtyping to Date, Washoe County, 2024-2025

Influenza Subtype	# of Specimens	% of Total Specimens
A (H3)	0	0.0%
A (2009 H1N1)	0	0.0%
A (Unknown)*	11	100.0%
B (Victoria)	0	0.0%
B (Yamagata)	0	0.0%
B (Unknown)*	0	0.0%
Total	11	100%



*Unknown includes both rapid and unsubtyped PCR results.

Figure 6. Positive Specimens Submitted to NSPHL, Subtyping to Date by Week, Washoe County, 2024-2025



*Unknown includes both rapid and unsubtyped PCR results.

Influenza Hospitalizations

Medical records are reviewed for cases with evidence of a positive influenza test who were hospitalized for greater than or equal to 24 hours. Information on the number of hospitalized cases, the number of hospitalized cases vaccinated, number of intensive care unit (ICU) admissions, and number of deaths among hospitalized cases are reported. Rates are per 100,000 population.

- The highest proportion of specimens among hospitalized cases was A (Unknown) at 100.0% of specimens.
- The highest proportion of specimens among hospitalized cases to date has been A (Unknown) at 100.0% of specimens.
- The influenza weekly hospitalization rate per 100,000 population in Washoe County was 1.0.
- The influenza cumulative hospitalization rate per 100,000 population in Washoe County was 1.0.
- The age group with the highest weekly influenza hospitalization rate per 100,000 population in Washoe County was ≥65-year age group at 3.4.
- The age group with the highest cumulative influenza hospitalization rate per 100,000 population in Washoe County was ≥65-year age group at 3.4.

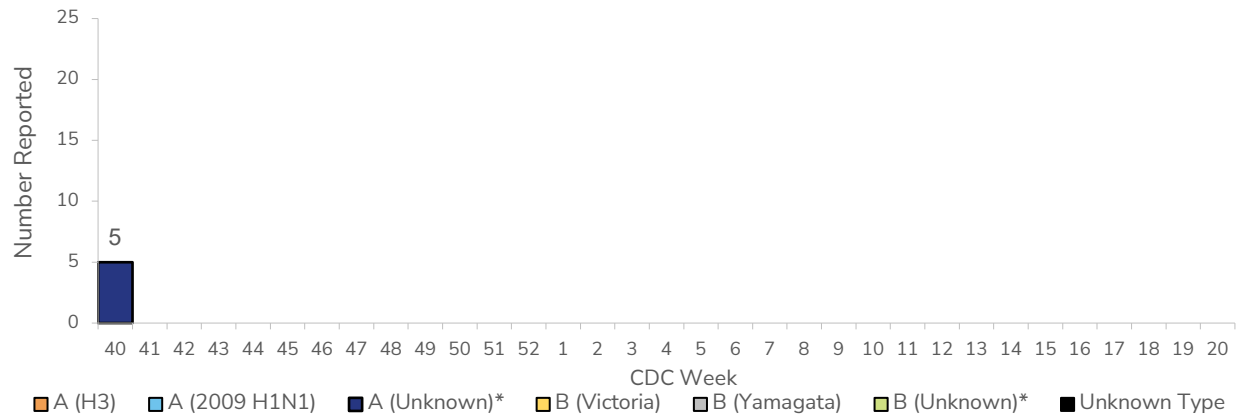
Table 2. Number of Hospitalized Cases with Lab-Confirmed Influenza by Vaccination, ICU, and Death Status, Washoe County, 2024-2025

	Current Week (Week 40)								Cumulative for 2024-2025 Influenza Season							
	September 29, 2024 - October 5, 2024								September 29, 2024 - October 5, 2024							
	Hosp.		Vax [§]		ICU		Death		Hosp.		Vax [§]		ICU		Death	
	#	%	#	%	#	%	#	%	#	%	#	%	#	%	#	%
Total # of cases reported	5	N/A	0	0	0	0	0	0	5	N/A	0	0	0	0	0	0
Influenza A (H3)	0	0	0	0	0	0	0	0	0	0	0	0	0	0	0	0
Influenza A (2009 H1N1)	0	0	0	0	0	0	0	0	0	0	0	0	0	0	0	0
Influenza A (Unknown)*	5	100	0	0	0	0	0	0	5	100	0	0	0	0	0	0
Influenza B (Victoria)	0	0	0	0	0	0	0	0	0	0	0	0	0	0	0	0
Influenza B (Yamagata)	0	0	0	0	0	0	0	0	0	0	0	0	0	0	0	0
Influenza B (Unknown)*	0	0	0	0	0	0	0	0	0	0	0	0	0	0	0	0
Influenza Unknown Type	0	0	0	0	0	0	0	0	0	0	0	0	0	0	0	0

*Unknown includes both rapid and untyped PCR results.

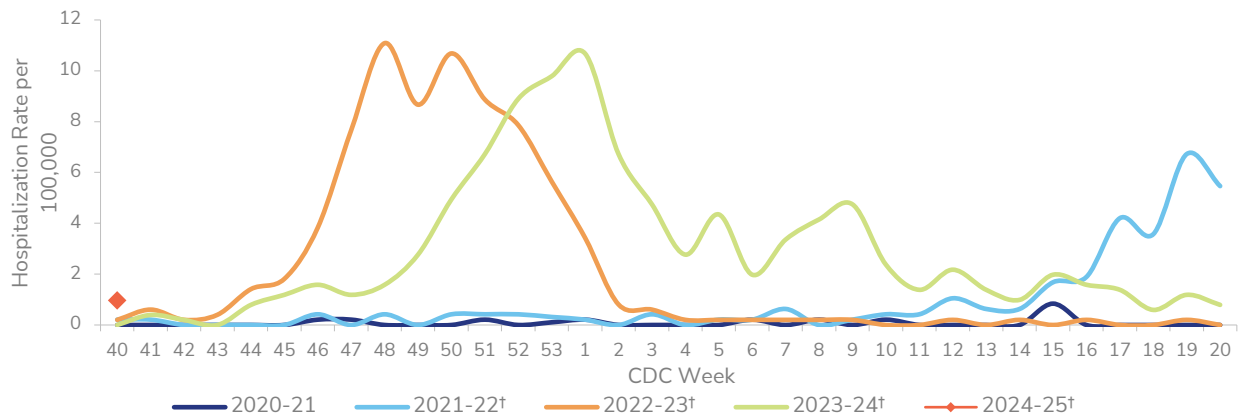
§Vaccination status determined among hospitalized cases only. Patient is considered vaccinated if they received a flu vaccine ≥ 2 weeks prior to illness onset.

Figure 7. Influenza Positive Tests Among Hospitalized Cases by Week Reported, Washoe County, 2024-2025



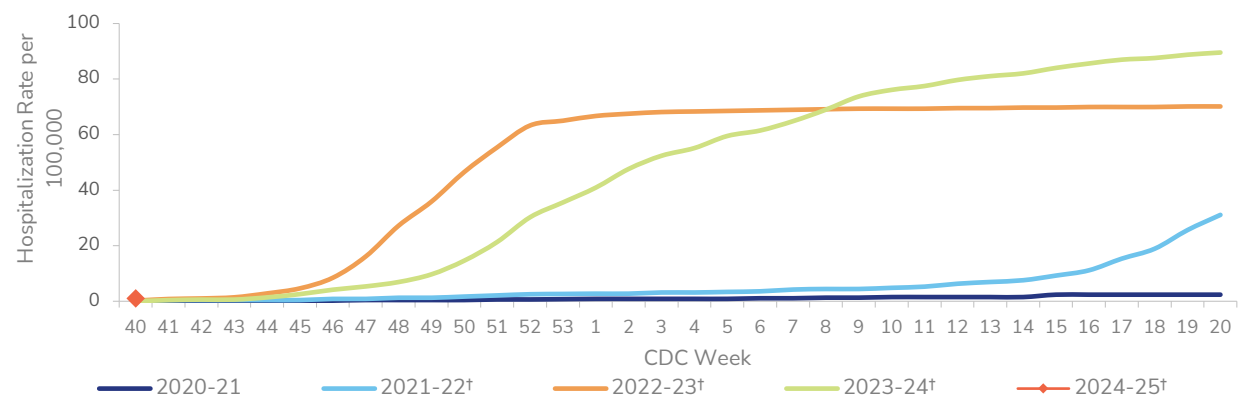
*Unknown includes both rapid and unsubtyped PCR results.

Figure 8. Influenza Weekly Hospitalization Rate per 100,000 Population, Washoe County, 2020-2024 Seasons†



† Does not have a week 53, so the week 53 value is an average of week 52 and week 1.

Figure 9. Influenza Cumulative Hospitalization Rate per 100,000 Population, Washoe County, 2020-2024 Seasons†



† Does not have a week 53, so the week 53 value is an average of week 52 and week 1.

Data in this report are preliminary and may be updated in future reports as additional information is received throughout the respiratory virus season.

Figure 10. Influenza Weekly Hospitalization Rate per 100,000 Population by Age Group, Washoe County, 2024-2025

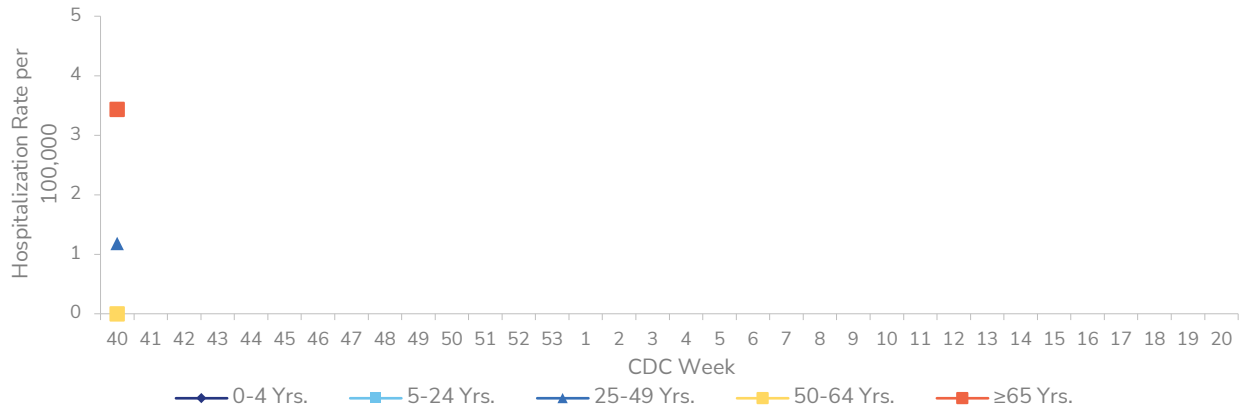
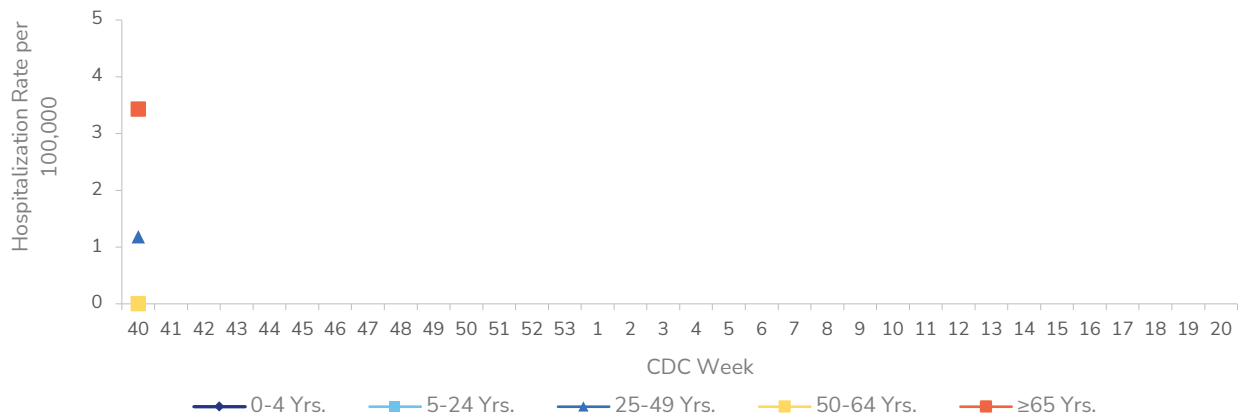


Figure 11. Influenza Cumulative Hospitalization Rate per 100,000 Population by Age Group, Washoe County, 2024-2025



Data in this report are preliminary and may be updated in future reports as additional information is received throughout the respiratory virus season.

Influenza Deaths

For surveillance purposes, an influenza-associated death is defined as a death resulting from a clinically compatible illness that was confirmed to be influenza by an appropriate laboratory or rapid diagnostic test with no period of complete recovery between the illness and death. Only pediatric deaths are considered reportable. Hospitalization is not required to be considered an influenza-associated death; therefore, counts presented here may be higher than those presented among hospitalized cases.

- To date, 0 influenza-associated deaths have been reported.

Table 3. Cumulative Number of Influenza-Associated Deaths by Age Group & Hospitalization Status, Washoe County, 2024-2025

Age Group	Deaths (Hospitalized)	Deaths (All)
0-4 Yrs.	0	0
5-24 Yrs.	0	0
25-49 Yrs.	0	0
50-64 Yrs.	0	0
≥65 Yrs.	0	0
Total	0	0

COVID-19 Cases, Hospitalizations, & Deaths

COVID-19 is the disease caused by severe acute respiratory syndrome coronavirus 2 (SARS-CoV-2) virus. Symptoms of COVID-19 include fever, chills, rigors, myalgia, headache, sore throat, nausea or vomiting, diarrhea, fatigue, congestion or runny nose, cough, shortness of breath, difficulty breathing, olfactory and taste disorder, confusion or change in mental status, persistent pain or pressure in the chest, pale, gray, or blue colored skin, lips, or nail beds, and inability to wake or stay awake. Severe respiratory illness may also present with pneumonia or acute respiratory distress syndrome.

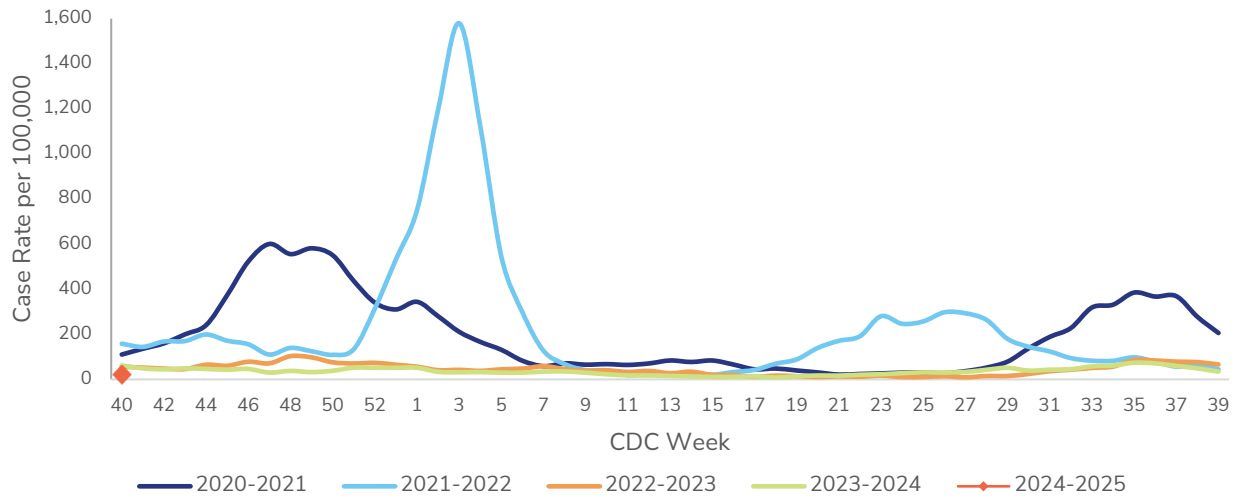
Only laboratory conducted tests are reported to NNPH, no at-home tests are counted in these data. Medical records are reviewed for cases with evidence of a positive SARS-CoV-2 test within 14 days prior to hospitalization who were hospitalized for greater than or equal to 24 hours. Deaths due to COVID-19 are those for which the investigation confirmed SARS-CoV-2 infection and determined that COVID-19 was the cause of death or contributed to the cause of death, AND/OR the death certificate lists a specific COVID-19 ICD-10 code.

- 113 cases of COVID-19 were reported for the current week.
- The rate of COVID-19 was 22.0 cases per 100,000.
- The age group with the highest weekly COVID-19 rate per 100,000 population in Washoe County was the ≥65-year age group at 46.9 per 100,000 population.

Table 4. Number and Rate per 100,000 of COVID-19 Cases by Current Week, Washoe County

	Current Week (Week 40) September 29, 2024 - October 5, 2024	
Age Group	Count	Rate per 100,000
0-4 Yrs.	8	27.6
5-24 Yrs.	16	11.6
25-49 Yrs.	28	16.6
50-64 Yrs.	20	22
≥65 Yrs.	41	46.9
Total	113	22

Figure 12. COVID-19 Weekly Case Rate per 100,000 Population, Washoe County, 2020-2024



Data in this report are preliminary and may be updated in future reports as additional information is received throughout the respiratory virus season.

Figure 13. COVID-19 Weekly Hospitalization Rate per 100,000 Population, Washoe County, 2020-2024

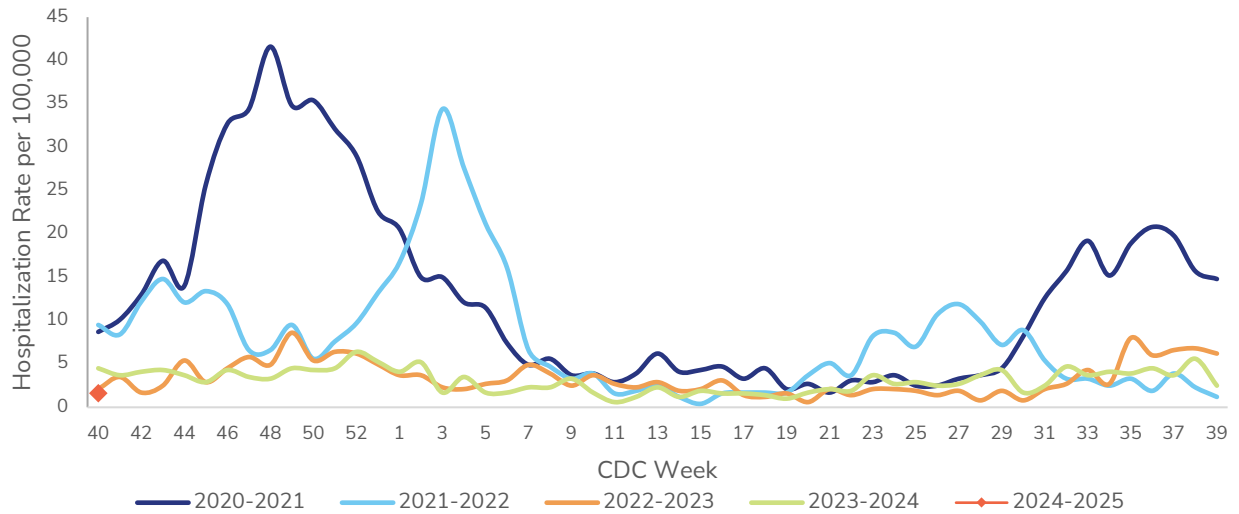


Figure 14. COVID-19 Weekly Hospitalization Rate per 100,000 Population by Age Group, Washoe County, 2024-2025

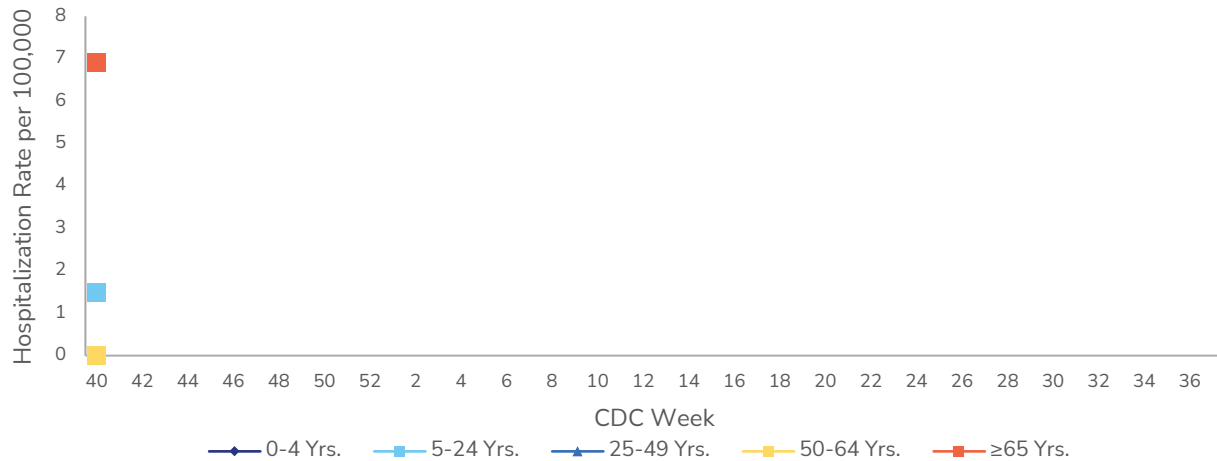


Table 5. Cumulative Number of COVID-19 Deaths by Age Group, Washoe County, 2024-2025

Age Group	Deaths (All)
0-4 Yrs.	0
5-24 Yrs.	0
25-49 Yrs.	0
50-64 Yrs.	0
≥65 Yrs.	1
Total	1

Data in this report are preliminary and may be updated in future reports as additional information is received throughout the respiratory virus season.

Respiratory Syncytial Virus

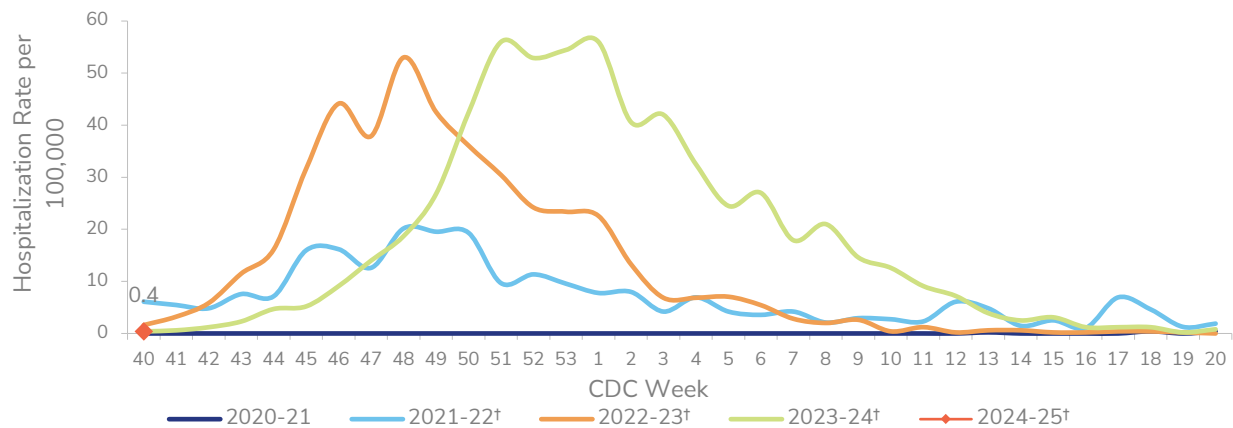
Respiratory Syncytial Virus (RSV) is a common respiratory virus that can present with flu-like signs and symptoms (e.g., fever, coughing, runny nose). RSV, while usually presented with mild symptoms, can be serious, especially for infants and older adults. It is the most common cause of bronchiolitis and pneumonia in children younger than 1 year of age. RSV is a reportable condition in Nevada.

- 2 cases of RSV were reported for the current week.
- The rate of RSV was 0.4 cases per 100,000.
- The age group with the highest weekly RSV rate per 100,000 population in Washoe County was 50-64-year age group at 2.2.
- The age group with the highest cumulative RSV rate per 100,000 population in Washoe County was 50-64-year age group at 2.2.

Table 6. Number and Rate per 100,000 of RSV Cases by Current Week and Cumulative for the Season, Washoe County, 2024-2025

Age Group	Current Week (Week 40) September 29, 2024 - October 5, 2024		Cumulative for 2024-2025 Influenza Season September 29, 2024 - October 5, 2024	
	Count	Rate per 100,000	Cumulative Count	Cumulative Rate per 100,000
0-4 Yrs.	0	0.0	0	0.0
5-24 Yrs.	0	0.0	0	0.0
25-49 Yrs.	0	0.0	0	0.0
50-64 Yrs.	2	2.2	2	2.2
≥65 Yrs.	0	0.0	0	0.0
Total	2	0.4	2	0.4

Figure 15. RSV Case Rate per 100,000 Population by Week Reported, Washoe County, 2020-2024 Seasons†



† Does not have a week 53, so the week 53 value is an average of week 52 and week 1.
Only the current week, highest and lowest rate weeks are shown with data labels.

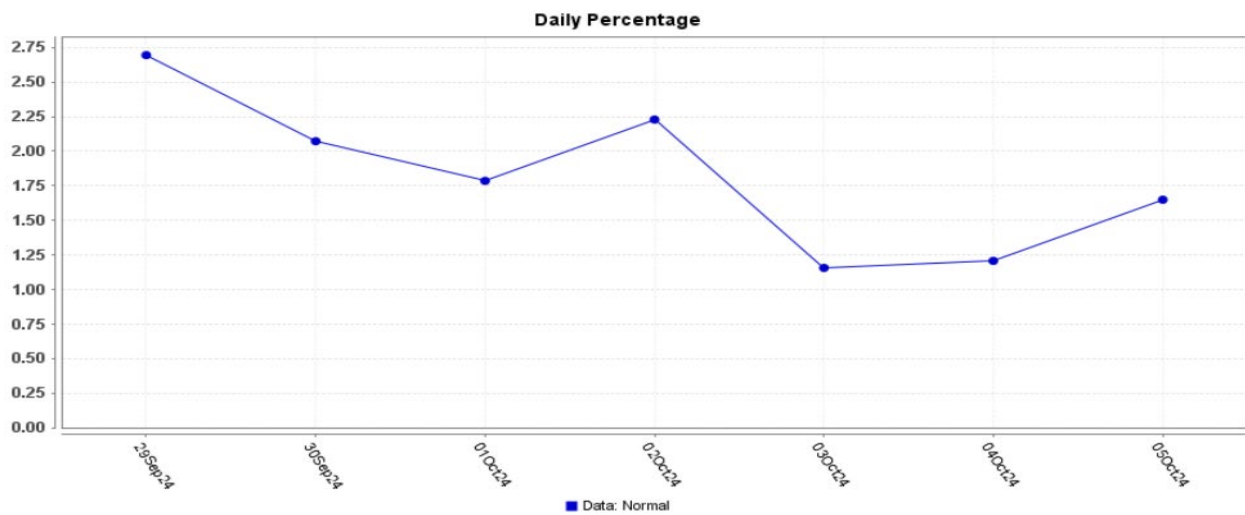
Data in this report are preliminary and may be updated in future reports as additional information is received throughout the respiratory virus season.

Syndromic Surveillance

Emergency Department (ED) Visits and Urgent Care (UC) Visits

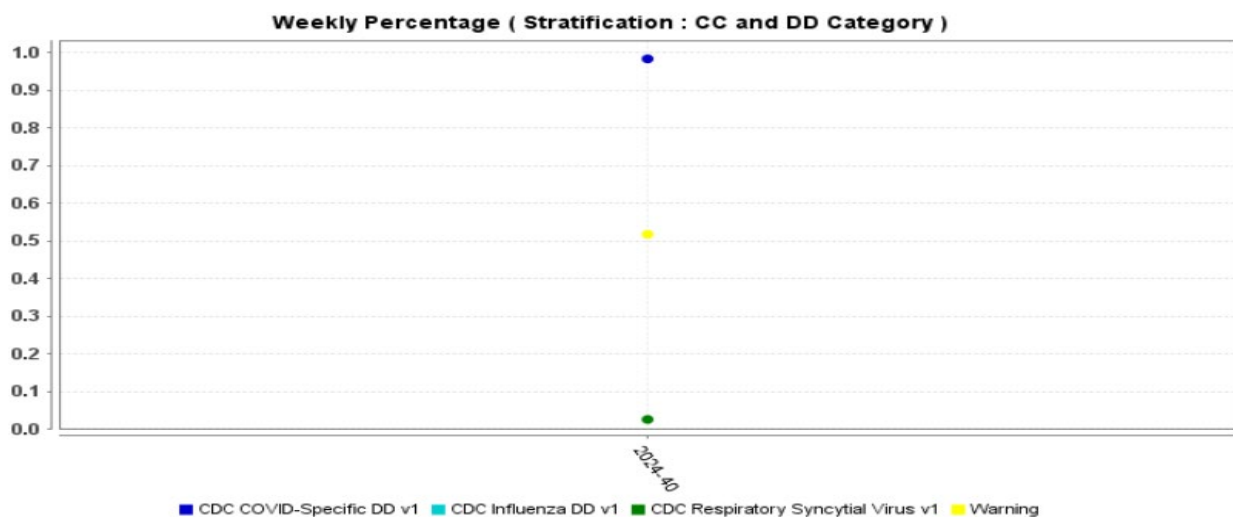
Percentage of patients seen for ILI (i.e., influenza or fever and a cough and/or a sore throat) in EDs and UCs is presented in Figure 16. The overlay depicts ILI syndrome in blue while alerts appear as yellow and/or red dots, indicating an unusually high percentage of ILI visits according to ESSENCE algorithms. Percentage of patients seen for Influenza, COVID-19, and RSV in EDs and UCs is presented in Figure 17. Conditions are defined by discharge diagnosis code (e.g., ICD-10 codes).

Figure 16. Percentage of ED and UC* Visits for ILI for Week 40, Washoe County, 2024-2025



Data source: ESSENCE (National), *14 Emergency Departments/Urgent Cares reporting to ESSENCE.

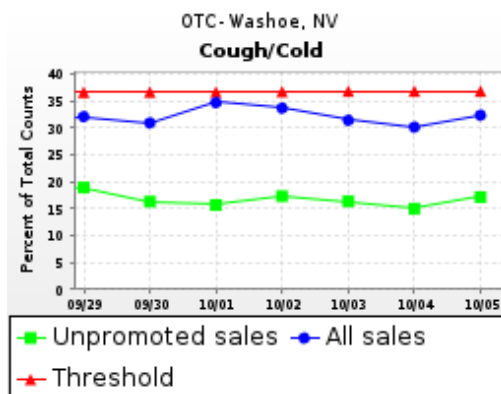
Figure 17. Percentage of ED and UC* Visits for Influenza, COVID-19, and RSV for Week 40, Washoe County, 2024-2025



Data source: ESSENCE (National), *14 Emergency Departments/Urgent Cares reporting to ESSENCE.

Over the Counter (OTC) Sales for Cough and/or Cold Remedies

Figure 18. OTC Sales for Cough and/or Cold Remedies for Week 40, Washoe County, 2024-2025



Data source: National Retail Data Monitor Data coverage in Washoe County

Surveillance Changes 2024-2025 Season

- Rates per 100,000 for hospitalizations and RSV are now calculated and presented in place of raw numbers. Both are now the rates depicted in the *Weekly Summary & Changes from Previous Week*.
- Weekly rates per 100,000 for all influenza hospitalizations in Washoe County are given along with age group.
- A figure was added to show percent percentage of ED and UC Visits for Influenza, COVID-19, and RSV using discharge diagnoses reported by syndromic surveillance ESSENCE data.
- Starting with the 2023-2024 influenza season, Nevada implemented the use of ESSENCE data for ILI data reporting to CDC's ILINet. The number of reporters using ESSENCE for ILI reporting for Washoe County went from 11 to 12 (of 14 total reporters).
- Influenza A (H1) is no longer reported in the NSPHL section as not routinely tested for by NSPHL.
- The pneumonia, influenza, and/or COVID-19 (PIC) death percentages are no longer collected and calculated locally and are not compared to CDC's weekly percentages and "epidemic threshold."
- The RSV section has been updated to now include a table showing weekly and cumulative counts and rates by age groups. The RSV figure now depicts comparative rates by season rather than counts and highlights the lowest, highest, and current week's rates of the current season.
- The COVID section has been created to include laboratory-confirmed case data for SARS-CoV-2 based on labs reported to NNPH. This is a reportable condition in Nevada.